

FLOROK
BRAND

CRYSTAL CLEAR & STAIN

A THERMOPLASTIC ACRYLIC
COATING/SEALER
FOR
CONCRETE AND MASONRY



Florok CRYSTAL CLEAR and CRYSTAL STAIN are based on a combination of thermoplastic methyl methacrylate-ethyl acrylate copolymers plus modifiers, additives, flattening agents and pigments as required, all in complete dilution of highly refined solvents.

Florok CRYSTAL CLEAR and CRYSTAL STAIN cover a wide range of acrylic coatings for concrete and masonry walls and floors. While each formula is similar in nature, each is distinctive in performance and is more suitable for certain specific job requirements than others.

Results of independent tests made by the Bureau of Standards, Portland Cement Association, Brick Institute of America, Precast Concrete Association and the Concrete and Masonry Association proved that formulations based on Methyl Methacrylate rated highest of all formulas evaluated.



THE CHARGAR CORPORATION

299 WELTON STREET • HAMDEN, CONNECTICUT 06511

TELEPHONE (203) 562-9948

PRODUCT No.

211



CRYSTAL STAIN

CRYSTAL STAIN is a translucent sealer containing acrylic copolymers of identical nature to CRYSTAL CLEAR. However, in addition it contains non-fading, inorganic oxide pigments, and ultraviolet stable colorants of sufficient strength and quantity to uniform concrete, masonry and brick color variations.

CRYSTAL STAIN will provide a long lasting architectural color toning effect to concrete and masonry without giving surface a painted look, or changing its texture or natural beauty.

CRYSTAL STAIN is designed to penetrate into the substrate. The acrylic resins chemically and physically lock into the masonry or concrete surface to become part of it, to form an exceptionally durable and effective moisture barrier to help prevent exterior dampness from entering the interior.

CRYSTAL STAIN will hide stains and discoloration caused by efflorescence and other natural defects and imperfections found in most concrete and masonry surfaces.

CRYSTAL STAIN is non-yellowing, alkali, acid, pollution and acid rain resistant.

CRYSTAL STAIN by sealing the surface against moisture penetration, reduces staining and discoloration but still has excellent vapor transmission and breathing qualities.

CRYSTAL STAIN colorants remain in suspension for an even, uniform stain effect to enhance the final shade and appearance of the surface to which it had been applied.



TECHNICAL DATA

of Crystal Clear & Crystal Stain Vehicle.

General Characteristics

Color	water white
pH	neutral
Sward Hardness (overnight)	50
Tukon Hardness (one week)	12.6
Knife Adhesion (one week)	Very good
Tack Free Time	15 minutes
(22.5% solids content)	
Outdoor Exposure Rating	Excellent
(Portland Cement Association)	
ASTM D-525-53T	Test exceeds

Finishes:

Gloss—Semi-gloss—Flat

Formulations available passing FDA specifications and Rule 66 solvent, Clean Air Standards, Ecology Safe Grade.

WARRANTY

Florok CRYSTAL CLEAR and CRYSTAL STAIN is warranted for 10 years.

The Chargar Corporation warrants that Florok CRYSTAL CLEAR and CRYSTAL STAIN when applied to any sound, above grade concrete or masonry surface, in accordance with the Manufacturers published instructions and directions on the container, and when applied in good workmanlike manner, in sufficient quantities, will be:

- Non-fading, non-yellowing and non-oxidizing.
- Resists chalking, cracking or flaking.
- Will repel water under normal, reasonable weather conditions.

The Chargar Corporation warrants that Florok CRYSTAL CLEAR and CRYSTAL STAIN are free of defects and that if at any time within the 10 year period any such failure occurs, will supply sufficient material to correct condition.

This Warranty subject to all provisions of Standard Warranty. Copy available upon request.

BASIC USES

CRYSTAL CLEAR and CRYSTAL STAIN offer a wide range of effective water repellent and waterproofing treatments for architectural concrete, masonry block, bricks, textured concrete, stucco, plaster, colored concrete, exposed aggregate and natural stone.

In addition to its weather resistant treatments, it provides a tough, durable, tile-like coating that highlights and locks in coloring and natural beauty of flagstone, slate, terrazzo and many other concrete and masonry surfaces.

Use on interior or exterior walls, floors, patios, walks and decks in industrial, schools, institutions, commercial and residential buildings.



CRYSTAL CLEAR when applied to ground face block or exposed aggregate treatments highlight stone colors and texture.

ADVANTAGES

- Non-yellowing on exposure to ultraviolet.
- Non fading. Resists cracking, peeling or flaking.
- Weather resistant. Will keep surface clean and free of airborne dust, industrial fumes and grime.
- Highly resistant to acid rain.
- A water resistant film. Bridges minor cracks and voids to repel water.
- Prevents or greatly reduces efflorescence, spalling and staining.
- Excellent resistance to strongest cleaning agents, alkalis, mild acids, grease, oil and most chemicals.
- Penetrates deep into substrate to improve resistance to weather erosion.
- Allows masonry to breathe. Good moisture and vapor transmission.
- Ready to use. One part system.

FLOOROK
BRAND

CRYSTAL CLEAR

CRYSTAL CLEAR is a clear acrylic coating. Available in many formula variations, each designed to provide distinct characteristics which may suit or serve specific job conditions or requirements more advantageously.

CRYSTAL CLEAR — Standard is of medium viscosity. The most popular all around protective sealer for most floor and wall surfaces. Contains a minimum of 18% solids.

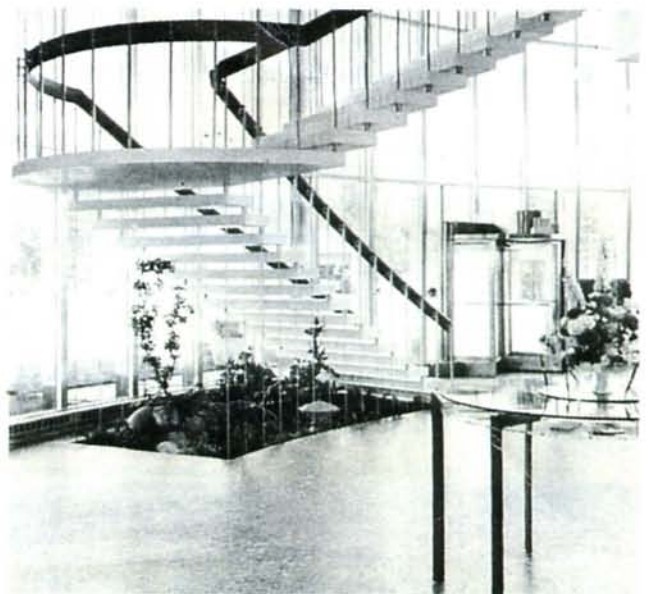
CRYSTAL CLEAR — Stone Seal is a medium viscosity coating designed to seal dense floor surfaces as flagstone, quarry tile, terrazzo, etc., where a low sheen is desired. Minimum solids 18%.

CRYSTAL CLEAR #951 is a medium viscosity penetrating sealer for concrete walls, panels, exposed aggregate, split rib, fluted block, etc. Contains a minimum of 15% solids.

CRYSTAL CLEAR 980F is a low viscosity, penetrating sealer for concrete and masonry surfaces where a flat finish with no sheen is desired. Formulated specifically for Military Installations. Contains minimum solids of 8%.

CRYSTAL CLEAR #960 is a low viscosity, very deep penetrating, invisible water repellent treatment for concrete and masonry walls. Minimum solids 10%.

CRYSTAL CLEAR PLUS is of heavy viscosity. Also contains silicone resins for added weather resistance and durability. High build up for porous masonry. Minimum solids 30%.

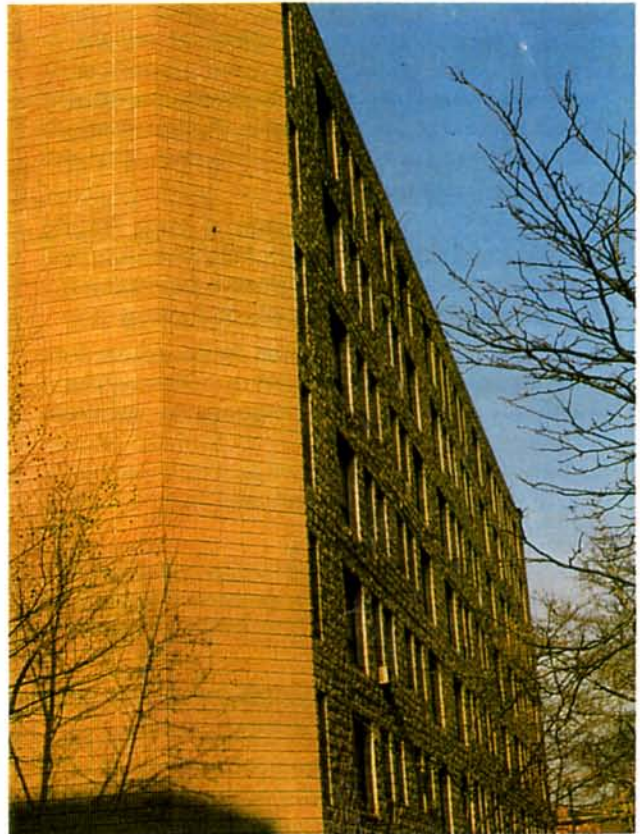




CRYSTAL CLEAR & CRYSTAL STAIN

Florok CRYSTAL CLEAR and CRYSTAL STAIN has been tested in accordance with the following ASTM Specifications:

- D 543 Acid & Alkali Resistance
- D 658-70 Abrasion Resistance
- D 659-80 Degree of chalking
- D 660-76 Degree of checking
- D 661-75 Degree of cracking
- D 662-75 Degree of erosion
- D 714-81 Degree of blistering
- D 772-75 Degree of flaking
- D 882-80 Weather Testing
- D 968-72 Abrasion testing by falling sand
- D 1014 Exterior exposure test
- D 1395 Abrasion resistance of clear floor coating
- D 1544-67 Transparency-Liquid clarity test
- D 1653-62 Vapor transmission-breathing ability
- D 1654 Corrosion environment test
- D 1759 Color stability
- D 2244 Color retention
- D 1647 Resistance to water & alkali
- D 1712 Resistance to sulfide fumes in air pollution
- D 3134 Uniformity of appearance
- E 398-70 Vapor transmission or breathability
- TT 555 B Wind driven rain test



APPLICATION

All surfaces must be clean and structurally sound. Remove dust, dirt and atmospheric contamination. Repair voids and cracks. Repoint and recaulk as required. Surface must be dry. Temperature minimum of 40° F.

Application may be made with brush, roller or spray. Application must be made in an even, saturating manner. Avoid excessive run down, draping or overlapping. Protect shrubbery and glass from overspray.

Test panels should be made prior to full scale application, to determine type material, rate of application, number of coats and method of application best suited to job conditions.

WARNING: Material is flammable. Avoid exposure to flame or sparks. Use good ventilation during interior applications.



BROWN



BUFF



CREAM WHITE



LIMESTONE



GREY



TILE RED

Florok CRYSTAL STAIN is available in white and six standard colors. They may be intermixed, making it possible to attain the widest range of shades and effects.

Custom blending and color matching in ranges from translucent to full color opacity also available.